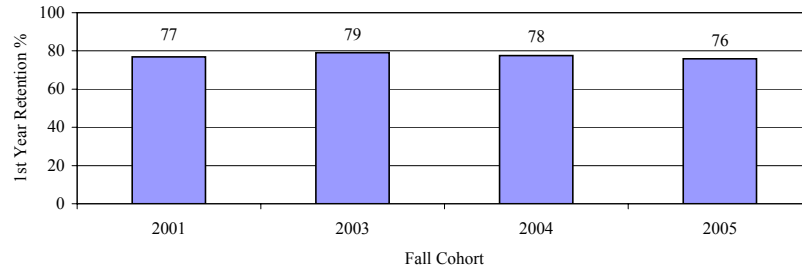


**Georgia Southern University
First Time Freshman 1st Year Retention**

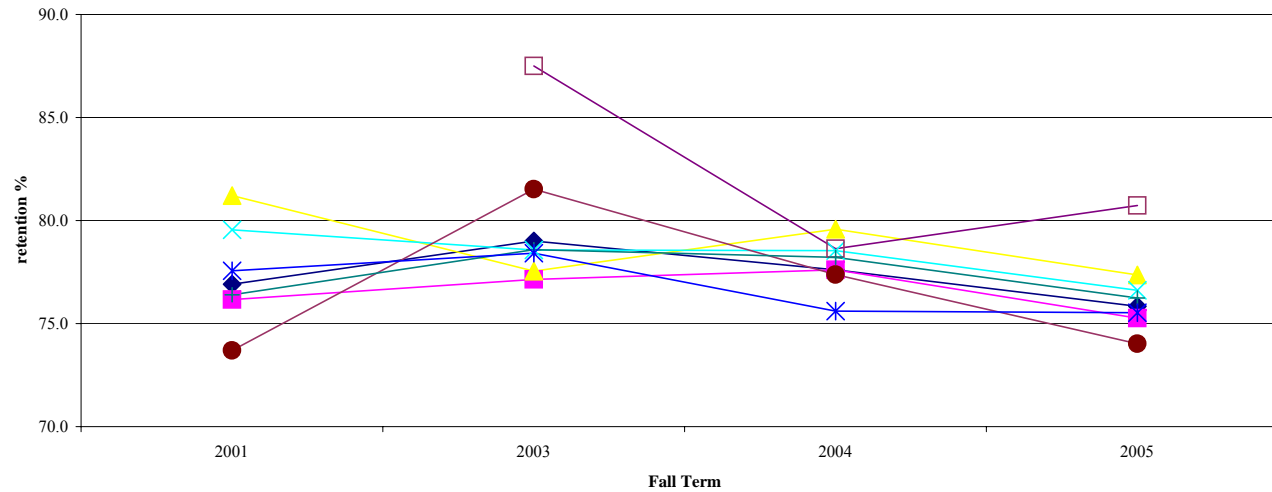
Georgia Southern University



College/Major	2001			2003			2004			2005		
	Cohort	n	%	Cohort	n	%	Cohort	n	%	Cohort	n	%
Georgia Southern University	2,633	2,025	76.9	2,735	2,161	79.0	2,983	2,315	77.6	3,125	2,370	75.8

Cohorts are IPEDS First Time, Full Time, Degree-seeking Freshmen. Fall 2005 to Fall 2006 retention is based on YEN0608 as of 9/18/2006.

Comparison of Retention Rates

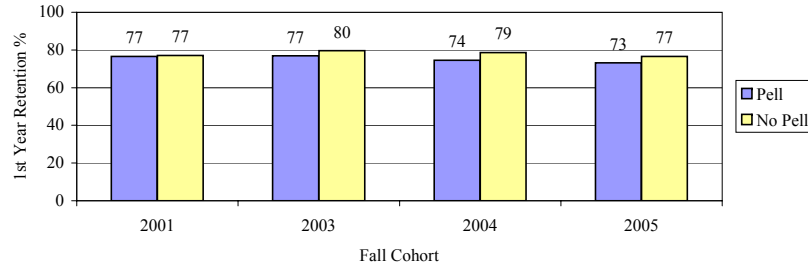


College	2001			2003			2004			2005		
	Cohort	n	%	Cohort	n	%	Cohort	n	%	Cohort	n	%
Georgia Southern University	2,633	2,025	76.9	2,735	2,161	79.0	2,983	2,315	77.6	3,125	2,370	75.8
College of Business Administration	491	374	76.2	420	324	77.1	478	371	77.6	578	435	75.3
College of Education	181	147	81.2	245	190	77.6	240	191	79.6	265	205	77.4
College of Health & Human Sciences	269	214	79.6	378	297	78.6	382	300	78.5	449	344	76.6
College of Information Technology	established 2003			96	84	87.5	103	81	78.6	83	67	80.7
College of Liberal Arts & Social Sciences	384	283	73.7	433	353	81.5	473	366	77.4	508	376	74.0
College of Science & Technology	644	492	76.4	593	466	78.6	684	535	78.2	682	520	76.2
Office of the Provost	664	515	77.6	570	447	78.4	623	471	75.6	560	423	75.5

Cohorts are IPEDS First Time, Full Time, Degree-seeking Freshmen. Fall 2005 to Fall 2006 retention is based on YEN0608 as of 9/18/2006.

**Georgia Southern University
First Time Freshman 1st Year Retention**

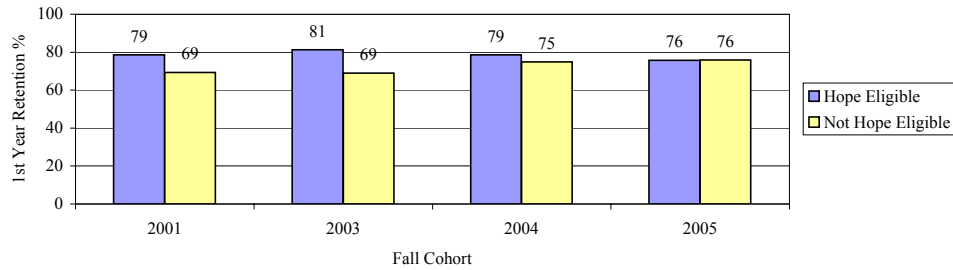
Georgia Southern University



Pell Status	2001			2003			2004			2005		
	Cohort	n	%	Cohort	n	%	Cohort	n	%	Cohort	n	%
Georgia Southern University	2,633	2,025	76.9	2,735	2,161	79.0	2,983	2,315	77.6	3,125	2,370	75.8
Pell	616	472	76.6	639	491	76.8	748	557	74.5	685	501	73.1
No Pell	2,017	1,553	77.0	2,096	1,670	79.7	2,235	1,758	78.7	2,440	1,869	76.6

Cohorts are IPEDS First Time, Full Time, Degree-seeking Freshmen. Fall 2005 to Fall 2006 retention is based on YEN0608 as of 9/18/2006.

Georgia Southern University



Hope Eligibility	2001			2003			2004			2005		
	Cohort	n	%	Cohort	n	%	Cohort	n	%	Cohort	n	%
Georgia Southern University	2,633	2,025	76.9	2,735	2,161	79.0	2,983	2,315	77.6	3,125	2,370	75.8
Hope Eligible	2,150	1,690	78.6	2,239	1,819	81.2	2,194	1,724	78.6	2,281	1,729	75.8
Not Hope Eligible	483	335	69.4	496	342	69.0	789	591	74.9	844	641	75.9

Cohorts are IPEDS First Time, Full Time, Degree-seeking Freshmen. Fall 2005 to Fall 2006 retention is based on YEN0608 as of 9/18/2006.